



# Care Coordination – Distributed network of Care



It is a volunteer effort.

It provides needed health care for the low income uninsured.

It is a distributed network of committed physicians each doing a discrete amount of care for the uninsured.

The network includes those other partners that the physicians rely on so that the physicians can provide care and services (hospitals, labs, imaging, dme).

The physicians and other partners are not reimbursed for any care or service.

It is not insurance; the patients receive no bills.



# Guidelines



- Organized Care for the uninsured
- Physicians must buy-in
- Patients must be responsible
- Must be responsive to the physician concerns
- Celebrate the physician and health care delivery system's generosity
- Everyone doing what they do best
- Everyone doing their fair share

*Connections have to be seamless, efficient and timely*



# Community Assets

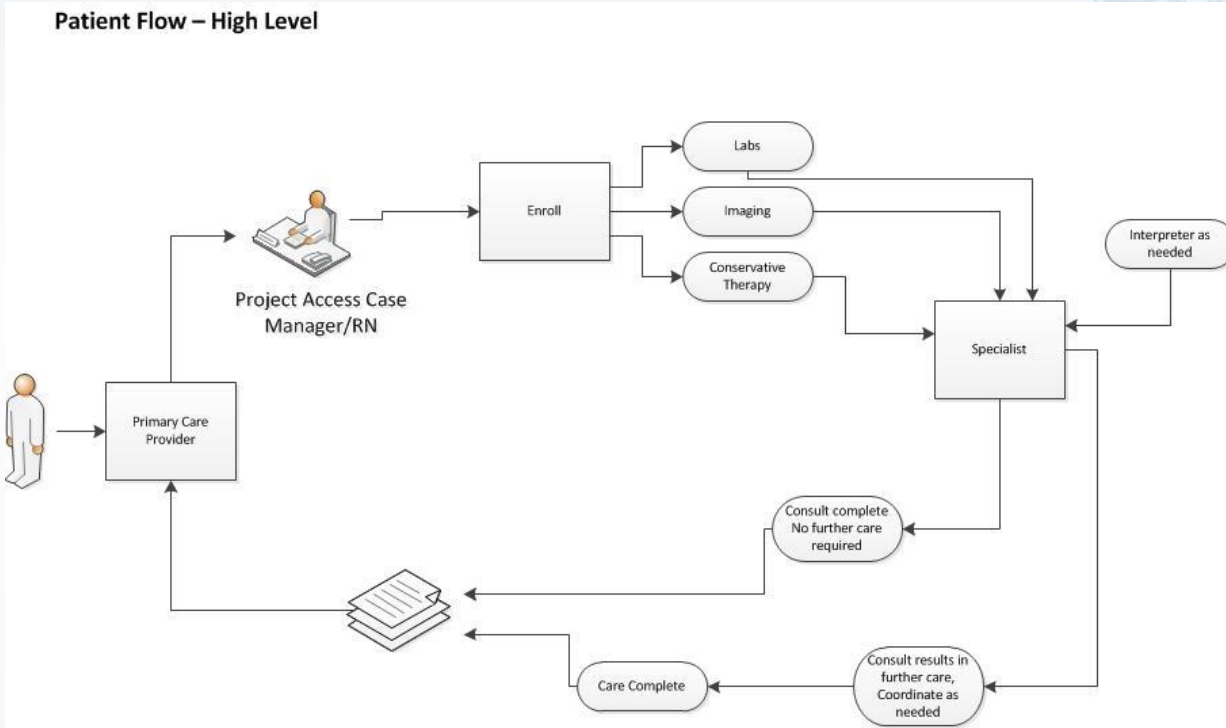


- Safety Net primary care services
  - FQHCs, Free Clinics, Tribal Clinics, etc.
- Local specialty groups
- Hospital systems with commitment to charity care
- Organizing system or entity



- Acts as Safety Net for the Safety Net
- King, Kitsap (Jefferson/Mason) and Snohomish Counties
- Specialty Care Services
- Partners with Primary Care and specialist as well as the services the specialists rely on







# Care Coordination



- Symptomatic patients
- PCP is part of Safety Net
- 39 different specialty services
- 1500+ Licensed Providers
- Uninsured – 200% FPL or below
- Medicaid as requested by the specialists.





# GI Services



One of two initial pilot efforts  
Pacific Medical Centers

10+ years ago

Challenged by No Show rate:

- 25 – 35% for initial appointment
- 35-40% for procedure





# Does Care Coordination Work



- Patients
- Specialists
- Primary Care Providers
- Specialty Health Systems







2015



6744 patients appointed

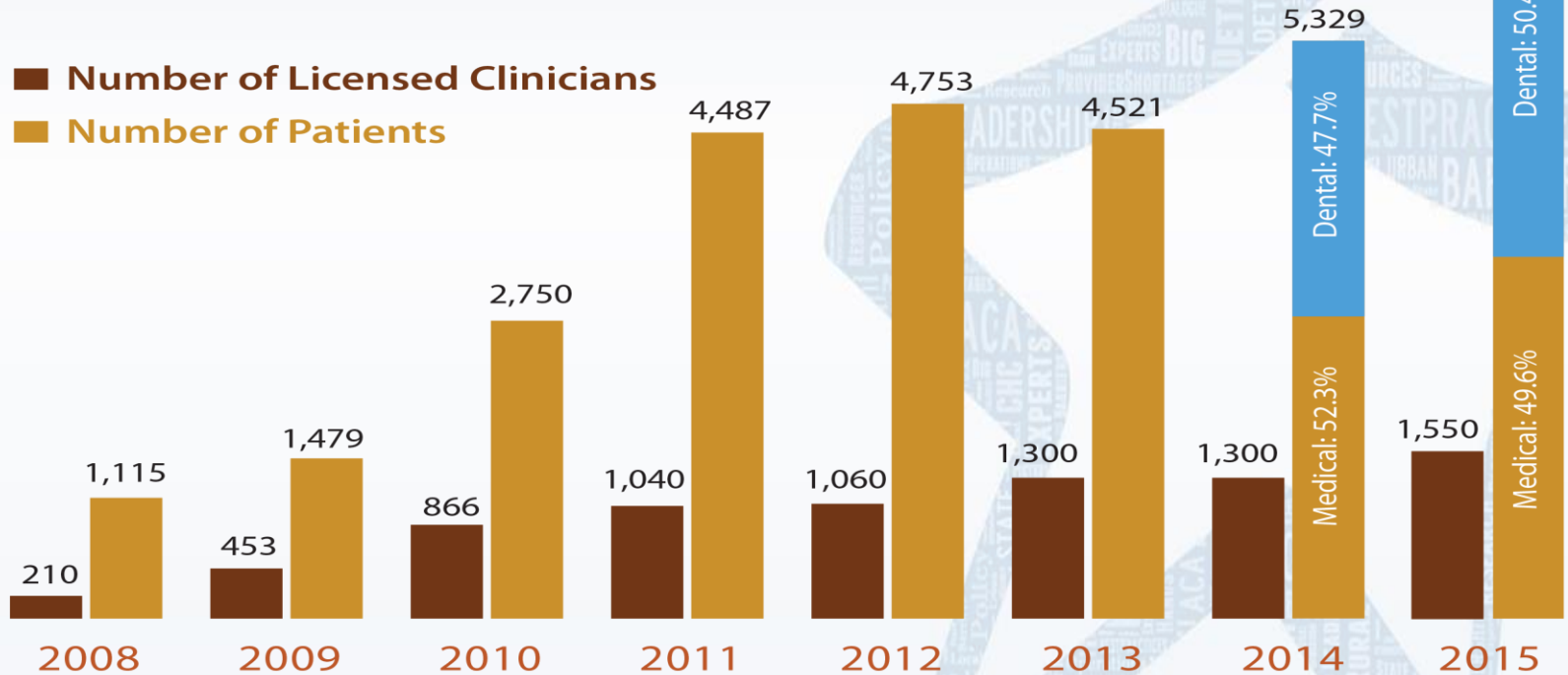
261 patients received GI services

84 GI and Colorectal specialists



# Service Growth

■ Number of Licensed Clinicians  
■ Number of Patients





# Questions?



Sallie Neillie  
[sallien@projectaccessnw.org](mailto:sallien@projectaccessnw.org)  
206-459-1590