



CANCER CONNECTION

April 2016

Dear WA CARES,

Welcome to the April edition of the Cancer Connection; the monthly briefer of the "Washington Cancer Partnership." If you have information about upcoming news, events, organizational happenings, or other cancer-related topics you wish to include in the May Cancer Connection please email them to me by May 13.

If you are interested in having your organization highlighted in an upcoming Cancer Connection, please feel free to reach out to me!

Jill Maughan Wisehart, MEd
Chair, NACDD Cancer Council
Special Projects Coordinator
Comprehensive Cancer Control Program
Office of Healthy Communities
WA State Department of Health
Desk - 360.236.3674
jill.maughanwisehart@DOH.WA.GOV

TABLE OF CONTENTS

[PARTNER SPOTLIGHT](#)
[BREAST CANCER](#)
[COLORECTAL CANCER](#)
[CERVICAL CANCER/HPV](#)
[LUNG CANCER/TOBACCO](#)
[SKIN AND OTHER CANCERS](#)
[SURVIVORSHIP/SUPPORT GROUPS](#)
[FUNDING](#)
[GENERAL](#)



Partner Spotlight

Public Health: Seattle King County (PHSKC)

Public Health

Seattle & King County



Public Health: Seattle and King County (PHSKC) is one of six prime contractors for the Breast, Cervical and Colon Health Program (BCCHP).

In the past 20 years, PHSKC has served over 48,000 women in 4 counties including demographically diverse King County and the more rural areas of Kitsap, Clallam and Jefferson Counties. Breast cancer was diagnosed in 675 women and cervical cancer or pre-cancerous cervical condition was diagnosed in 293 women. Since 2007 we have provided colon cancer screening services to hundreds of men and women. An additional 1350 women diagnosed at BCCHP-contracted facilities have received cancer and pre-cancer treatment services through the Medicaid Breast and Cervical Cancer Treatment Program (BCCTP) since 2001. Since the Affordable Care Act, we have seen the demographics of who we reach change. In 2015 approximately 75% of our clients were Spanish speaking as compared to 30% in 2013. We have dedicated contractors who work hard to reach men and women in the community to help them access BCCHP services as well as other services that impact their health and wellbeing.

BREAST CANCER

[Susan G. Komen Puget Sound's Annual Community Impact Celebration](#)



OUR MISSION UNITES US.
OUR VISION GUIDES US.
OUR PROMISE LEADS US FORWARD.

susan g. komen.  **Impact Celebration**



Community Grants & Partner Awards

Thursday, May 12, 2016 // 6:30 pm
MOHAI, 860 Terry Avenue N., Seattle



112 FIFTH AVENUE N.
SEATTLE, WA 98109

Raise a glass!

Join us to celebrate the community partners who help us fight breast cancer.

Thursday, May 12, 2016

Museum of History and Industry (MOHAI)
860 Terry Avenue N., Seattle

6:30 p.m. Reception | Refreshments served

7:00 p.m. Program | Community grants & partner award announcements

RSVP online at bit.ly/KPSImpact2016 or call 206-633-0303 ext. 110 by April 21.

SPONSORS:



COLORECTAL CANCER

[New 80% by 2018 Blog Posted](#)

A new 80% by 2018 Blog post featuring 80% by 2018 National Achievement Award Winner, the Tina Kiser Cancer Concern Coalition (TKC3), is now posted. The blog is live [here](#).

Hear from TKC3 chair, Dr. Michael Sarap, about the coalition's dramatic success in dramatically increasing colorectal cancer screening and lowering the rate of late stage diagnosis over the last 10 years.

[Colonoscopy Copay Webinar Replay Available](#)

In case you missed it, a replay of Tuesday's webinar on Colonoscopy Copays is now available [here](#).



[CLICK HERE](#)

Upcoming Webinar

eClinicalWorks Best Practices Guide- Thursday May 5th at 1:00pm EST

Utilizing the Electronic Health Record to Impact Change: Beyond the Pop-Up Reminder

Save the Date - Registration not yet opened. The May 5th webinar will provide an in-depth look at the [eClinicalWorks Best Practices Workflow and Documentation Guide](#) for eClinicalWorks. This webinar is best suited for those who work directly with EHRs and eClinicalWorks in particular. This is not an introductory webinar.

CERVICAL CANCER/HPV

[ASCO Statement: Human Papillomavirus Vaccination for Cancer Prevention](#)

The American Society of Clinical Oncology (ASCO) issued a policy statement this afternoon. Published in the Journal of Clinical Oncology, the statement outlines current barriers to HPV vaccination and recommendations to promote the uptake of these vaccines. ASCO calls on member oncologists to help lead the push for all adolescents and young adults to be vaccinated against cervical and other cancers. The statement is available [here](#).

[Research Project Update: AFIX Program Strategies for Improving HPV Vaccination Rates in the Field](#)



Attend on **Thursday, May 19, 2016** at **1:00PM ET** for "Research Project Update: AFIX Program Strategies for Improving HPV Vaccination Rates in the Field." This webinar will be geared towards AFIX coordinators, AFIX program field staff, trainers of field staff, and immunization managers. Presenters will share strategies and tools they are using in an ongoing study to adapt AFIX to the unique challenges posed by HPV vaccination.

The update on this project will include discussion of how the study team is:

- Using incentives, such as CMEs, to encourage vaccine providers to participate in AFIX
- Using an Immunization Report Card to communicate the problem of low HPV vaccination coverage
- Helping providers set measurable goals for HPV vaccination QI
- Emphasize provider recommendations as a QI focus

Dr. Melissa Gilkey, Assistant Professor of Population Medicine at Harvard Medical School & Harvard Pilgrim Health Care Institute, will discuss the tools and strategies that were used by the participating AFIX programs for improving HPV vaccination rates in the field. **Chrystal Averette** of the Washington Department of Health will share how, as part of this project, Washington State is implementing specific AFIX strategies in order to increase HPV vaccination rates.

To register for this event, click [here](#).

April 27th Town Hall "Someone You Love" Screening

Wednesday April 27, 2016. Open to the public!

Doors open at 6 pm, movie and expert town hall meeting 6:30-8:30

Stadium High School - 111 North E St, Tacoma, WA 98403

Need More Info? Pierce County Immunization Coalition (253) 798-3578.

LUNG CANCER/TOBACCO

[The Triangulum: Tobacco, Marijuana, and E-Cigarettes Webinar](#)

Thursday, May 26th 9:00am-12:00pm

Triangulum, Latin for triangle, reflects the intersection of tobacco, marijuana, and electronic cigarettes; the latter, being the delivery device for both these and other substances. This changing landscape is striking and something the tobacco control movement mustn't lose sight of: not only is the use of e-cigarettes growing, but also hookah pens that deliver aerosolized flavored aldehydes, with or without nicotine; heat-not-burn products producing a new chemically laced vapor; flavored little cigars, both regular and electronic; blunts and spiffs; and butane hash oil that you can dab, synthetic marijuana, which you can smoke and liquid THC, which you can aerosolize, not to mention old-fashion joints.

To capture the science behind these new developments, the TRDRP is bringing together an outstanding group of scientists to explain these and comment on this new terrain.

Panel

[Susan Weiss, Ph.D.](#), National Institute of Drug Abuse

"Adverse Effects of Marijuana: What We Know and What We Need to Know About its Combination with Other Substances, Including Tobacco"

[Suzaynn Schick, Ph.D.](#), University of California San Francisco

"Secondhand and Thirdhand Exposure to Smoke and Vapor"

[Kelvin Choi, Ph.D.](#), National Institute of Minority Health and Health Disparities

"The Epidemiology of Poly Substance Use Among Youth and Adults"

[Mary Rezk-Hanna, N.P.](#), University of California Los Angeles

[Kenneth Warner, Ph.D. \(Discussant\)](#), University of Michigan

"The End Game or a New Game; What Does This All Mean for Tobacco Control"

[Phillip Gardiner, Dr. P.H. \(Moderator\)](#), University of California Office of the President, Tobacco Related Disease Research Program

Click [here](#) to register!



[Washington State Department of Health Tobacco Quitline.](#)

The Quitline is currently offering up to 5 **FREE** counseling calls to help people quit tobacco. Two weeks of free nicotine replacement gum or patches is offered to qualified callers. No callers are turned away. If you have insurance please check with your health plan, as you may have a better benefit with no out-of-pocket costs.

Study Compares State Tobacco Cessation Interventions

Results from one of the largest comparative effectiveness studies of state tobacco cessation interventions were published in *Cancer*, a peer-reviewed journal of the American Cancer Society. "[Use and Effectiveness of Quitlines Versus Web-based Tobacco Cessation](#)



[Interventions among 4 State Tobacco Control Programs](#)" indicated that smokers who attempted to kick the habit using web-based smoking cessation services were almost as successful as those who use telephone. Congratulations to the CDC authors from the Comprehensive Cancer Control Branch: **Antonio Neri**, **Behnoosh Momin**, **Mary Puckett**, and **Sherrie Stewart**. Other authors included **Trevor Thompson** from the Cancer Surveillance Branch and **Jennifer Kahende** and **Lei Zhang** from the Office on Smoking and Health.

SKIN AND OTHER CANCERS

[Characteristics, Rates, and Trends of Melanoma Incidence among Hispanics in the United States](#)

Purpose: The purpose of this study is to describe the epidemiology of melanoma among Hispanics using data that cover nearly 100% of the United States (US) population.

Methods: The study used population-based cancer incidence data from the National Program of Cancer Registries and the Surveillance Epidemiology and End Results program to examine melanoma incidence rates and trends among Hispanics by sex, age, race, histology, anatomic location, stage, and tumor thickness.

Results: From 2008 to 2012, 6,623 cases of melanoma were diagnosed among

Hispanics. Rates were higher among males (4.6) than females (4.0), but females younger than age 55 had higher rates than males. The most common histologic subtype was superficial spreading melanoma (23%). Melanomas with poorer outcomes, such as nodular (NM) and acral lentiginous melanoma (ALM), were more common among males. Hispanic females had the highest proportion of melanoma on the lower limb and hip (33.7%) while Hispanic males had the highest proportion on the trunk (29.9%). Incidence rates for later stage and thicker tumors were significantly higher among Hispanic men than women. Incidence rates decreased significantly during 2003-2012 (AAPC= -1.4).

Conclusions: Clinicians and public health practitioners will need to reach the growing Hispanic population in the US with strategies for primary prevention and early diagnosis of melanoma. Results suggest Hispanics and providers need education to increase awareness about the characteristics of melanoma among Hispanics, including types that occur on non-sun-exposed areas (ALM, NM). Skin cancer prevention and awareness interventions targeting Hispanics should be culturally relevant. To access the manuscript, please visit [this site](#).

SURVIVORSHIP/SUPPORT GROUPS



[10th Annual "Moving Beyond Cancer to Wellness"](#)

What: The Fred Hutchinson Cancer Research Center Survivorship Program and Seattle Cancer Care Alliance are

hosting our 10th annual event for cancer survivors, patients, caregivers, friends, family and health care professionals. This free conference is designed to provide education on a variety of the late and long-term effects faced by cancer survivors after treatment in completed and to promote wellness and empowerment after cancer.

When: Saturday, June 4th 8:30 a.m. to 3:00 p.m.

Where: Fred Hutchinson Cancer Research Center, Thomas Bldg, 1100 Fairview Ave. N, Seattle, WA

Event Website: www.fredhutch.org/mbctw

For more event details and Registration: RSVP by May 27th - Space is Limited!

Online: www.fredhutch.org/mbctw

Phone: 206-667-2013

Email: survivor@fredhutch.org



[Registration Open! 2016 Biennial Cancer Survivorship](#)

Conference. Registration is open for the "Cancer Survivorship Research Innovation in a Rapidly Changing Landscape"

conference scheduled June 16-18 in Washington, DC. It will

focus on changes in the demography of the survivor population, how care is delivered to these individuals and their families, and the role of new technologies in the promotion of health and well-being.

To register, visit the conference website:

<http://www.cancer.org/subsites/survivorship2016>.

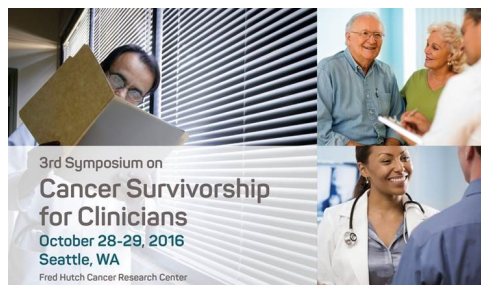
[The Annual Report to the Nation on the Status of Cancer \(1975-2012\)](#)

This report shows that death rates continued to decline for all cancers combined, as well as for most cancer sites for men and women of all major racial and ethnic populations.

This report is released each year in a collaborative effort by the American Cancer Society, CDC, NCI, and the North American Association of Central Cancer Registries. Read the report [here](#).

[3rd Symposium on Cancer Survivorship for Clinicians: Registration now Open!](#)

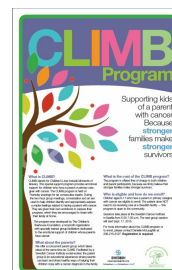
With survivorship now recognized as a distinct phase of care in the cancer continuum, the focus turns to surveillance for, and management of, long-term and late effects that occur as a result of cancer and its treatment, as well as the health promotion and prevention of disease strategies that are particularly important for cancer survivors. This conference, featuring speakers who are the leaders in the field of cancer survivorship, covers an important and increasingly relevant gap in the medical education of clinicians who care for cancer survivors.



Full agenda and online registration at www.fredhutch.org/2016-symposium. To request more information about this conference please call 206-667-2814, email survivor@fredhutch.org.

[Cancer Support Group](#). The Skagit Valley Hospital Regional Cancer Care Center offers a monthly support group for individuals and their caregivers dealing with the emotional life changing challenges of a cancer diagnosis. The group is open and available on a drop-in basis (pre-registration welcomed.) The group meets at **4 p.m. the second Thursday of each month**. To register, or for further information, please contact [Peter Wold](#), MSW, Oncology Social Worker. The meetings are held in the Safeway Conference Room at Skagit Valley Hospital Regional Cancer Care Center, third floor.

[CLIMB Group for Kids](#). The Swedish Cancer Institute is excited to announce that our CLIMB group is officially open for enrollment. CLIMB is a special support program that provides emotional support for children who have a parent or primary caregiver with cancer. The program is **FREE** and dinner is provided at the start of each session. CLIMB was developed by The Children's Treehouse Foundation and is open to any family, regardless of where they get their cancer care. Pre-registration is required and a family can refer themselves by calling 206-215-6127.



Cancer Comes to Work. Annually, approximately 1.6 million people will hear the words "you have cancer" and 44% of these individuals will be of working age. In addition, 80% of cancer survivors will return to work. Cancer

Pathways is hosting a half-day seminar that will provide HR professionals and managers with information that will help them be prepared when cancer enters the workforce.

Tuesday, May 17th from 8:00am-12:00noon at the Washington Athletic Club. \$195 registration, space is limited. To register, call 206-709-1400 or visit cancerpathways.org/education/cancer-comes-to-work.



Cancer Education for Teens. Since 2005, Cancer Pathways has offered an interactive course designed to raise teen awareness about cancer risk factors. The 50 minute program is offered through face-to-face presentations by Cancer Pathways representatives in area high schools and an online, e-learning platform available to schools throughout the State. More than 50,000 students in Washington have received this innovative presentation and 96% reported learning a new way to reduce their cancer risk. Contact Sally Benson for more details at sally@cancerpathways.org.



Lecture: Home-Style Nutrition with Cynthia Lair
Cooking your own meals affords you the peace of mind that comes with having control over the type and quality of ingredients in your meals. Find out which foods to emphasize and why moderation is a winning strategy. Food demo included. Saturday, May 14th, 10:00am-12:00noon at St. Anthony Hospital: CHI Franciscan Health Smalling Conference Room, Milgard Building 11567 Canterwood Blv NW, Gig Harbor. Visit their [website](#) to register.

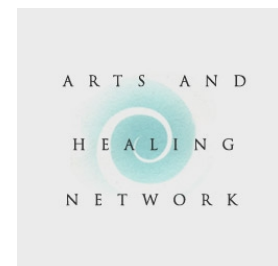


Lecture: Breast Reconstruction Surgery with Keith Paige, MD
Dr. Keith Paige of The Polyclinic will provide information on the pros and cons of different reconstruction procedures, their recovery times, and the various phases of reconstruction. Dr. Paige will also provide insight into the emotional and psychosocial journey of breast reconstruction following cancer and mastectomy. Thursday, May 19th, from 7:00-8:30pm at Cancer Pathways, 1400 Broadway, Seattle. Visit their [website](#) to register.

Cancer Lifeline provides **FREE** lectures, support groups, and health classes for cancer patients and their caregivers at four Seattle area locations: EvergreenHealth, Northwest Hospital Valley Medical Center, and the Dorothy O'Brien Center. For more information visit their website or call (206) 297-2500 or (800) 255-5505.



Art and Healing Group. First and third Mondays of each month, 2 - 4 p.m. in the Safeway Conference Room (third floor) at the Regional Cancer Care Center. Instructor Margaret Carpenter Arnett, BSN, ATR, has been doing art therapy with cancer patients for more than 20 years. Creating art can promote healing by reducing anxiety and stress and improving emotional well-being. Please note that artistic "skills" are not required! Come and join this fun and



welcoming group. For more information call 360-814-8255.



[The Seattle Cancer Care Alliance Patient and Family Resource Center](#) offers a monthly calendar of free classes for patients, families, and caregivers. From therapeutic yoga to food safety classes to luncheons for caregivers, SCCA offers all kinds of valuable support.



[The Swedish Cancer Education Center](#) offers a variety of complimentary patient education classes that are open to patients, family, friends, and caregivers. The classes range from cooking demonstrations to gentle yoga, and are offered at four of our different campuses. Here are a few of the classes we will be offering: Cancer Prevention: Living Above and Beyond, Cancer and Finances 101, and T'ai Chi. To register for classes, please call 1-800-SWEDISH or visit Swedish.org/classes. In addition to the educational classes Swedish offers, the Oncology Social Work department hosts support groups for prostate cancer, gynecological cancer, living with cancer, support for caregivers, and more.



[University of Washington Center for Child & Family Well-being](#) (CCFW) is dedicated to promoting the positive development of children and families by translating research for practical application. Through its Mindful Living and Practice Initiative, CCFW offers public lectures, professional training, and workshops to promote mindfulness practices in the community and provide parents and practitioners with ready access to the latest evidence-based knowledge.

FUNDING

[Miscellaneous Small Grants Available from Komen](#). These grants support some of the "unexpected" costs associated with a project, e.g. purchase of educational materials, food costs of a presentation session, survivor recognition, etc. Requests should comply with the following criteria:

- In their 16 country service area
- Specific to breast health/breast cancer
- Relevant to the mission of Komen
- Funding request may not exceed \$1,000
- Willingness to acknowledge support of the Puget Sound Affiliate
- Report financial and project progress to the Puget Sound Affiliate
- Allow participation of Puget Sound Affiliate representative(s) where appropriate



Small grants are due by the 25th day of each month. For more information, please contact [Robyn Sneeringer](#).

Washington Cancer Partnership Projects

80% by 2018 Washington Employer Challenge

This project aims to increase colon cancer screening rates across our state by partnering with employers. Enrollment in the challenge is an easy, online process and your organization will have hands on assistance every step of the way.

For assistance in enrolling your organization, contact [Cynthia Eichner](#) at the American Cancer Society.



Washington Alliance for Cancer Survivorship

This alliance arose from the June 2015 George Washington Cancer Institute survivorship workshop at EvergreenHealth. The focus of this group is helping healthcare systems to implement survivorship care plans. For more information contact [Rose Guerrero](#).

Washington Cancer Screening Network

This group provides a forum for networking and training among professionals dedicated to detecting cancer in the early stages. The next meeting will be held May 16th at the Dept. of Health office in Kent. For more details and to RSVP please contact [Jill Wisehart](#).

**FOR MORE INFORMATION ABOUT THE
WASHINGTON CANCER PARTNERSHIP,
VISIT OUR WEBSITE!**



Cancer Connection
April 2016

Links to external resources are provided as a public service, and do not imply endorsement by the Washington State Department of Health. For people with disabilities, this document is available on request in other formats. To submit a request, please call 1-800-525-0127 (TDD/TTY call 711).